



engineered for performance

# CONTENTS

Welcome	1
Intercoolers	2-7
Valves	8-15
Actuators	16-19
Alloy Tanks	20-22
Accessories	23
Silicone Hoses	24-25
Induction Kits	26
Chassis/Carbon Fibre	27



**When purchasing performance upgrades for your car you look for several things such as Performance, Quality, Value, and Customer Service. Forge Motorsport represents all of these and works hard to build upon their existing reputation. All Forge products deliver a level of performance far exceeding the capabilities of their OEM counterparts.**

Our valves offer faster throttle response, better boost retention and quicker recovery. All Forge products are made in our state-of-the-art facility in the U.K. All billet products are machined to the strictest tolerances and are subjected to 100% test and inspection.

All our fabricated products are welded by our in-house master craftsmen. Welding is a passion of Forge Motorsport and its unsurpassed quality in the marketplace is represented with robotic like precision. This means you will not only be getting an intercooler that performs second to none but it will look just as good on your car.

Forge Motorsport strives for customer satisfaction with unparalleled service. We have qualified staff in both England and the USA to assist you either by phone or email. If at any time you have a problem with one of our products we will take care of it with the Forge Motorsport 'No Hassle Guarantee'. This purchase protection is the industry's best.

Ultimately when you combine all of these attributes; performance, quality, value and customer service we feel there is no better choice for your car.

Sincerely

Your Performance Staff  
Forge Motorsport

The information contained in this catalogue is correct at the time of going to press. We reserve the right to change the contents of this catalogue without prior notice.  
Catalogue designed and produced by Maximum Designs - [info@maximumdesigns.co.uk](mailto:info@maximumdesigns.co.uk)  
Forge product photography and websites by Maximum Designs - [www.maximumdesigns.co.uk](http://www.maximumdesigns.co.uk)



**Over the years Forge Motorsport have grown in to one of the UK's premier manufacturers of products and accessories for race, competition and road vehicles.**

All Forge production is carried out in-house, continuing with our commitment to bring the best products and manufacturing processes to the UK, Europe and North America.

We have continued our expansion with the growth of our sales and distribution facility in Orlando USA and are continually increasing our production and development facilities in the UK to allow us to better serve our growing customer base.

When you purchase from Forge Motorsport you are assured of quality products and a service to match.

If you require a particular product that is not listed in this catalogue or on the web site, please call or e-mail and we will gladly assist with any queries.



FMFSITA  
A switchable valve for  
the 2.0 FSi turbo engine

#### UK

Telephone. +44 (0) 1452 380999

Email. [info@forgemotorsport.co.uk](mailto:info@forgemotorsport.co.uk)

#### USA

Telephone. (001) 407 447 5363

Email. [sales@forgemotorsport.com](mailto:sales@forgemotorsport.com)

Our products are now available to purchase direct online from the official websites at:

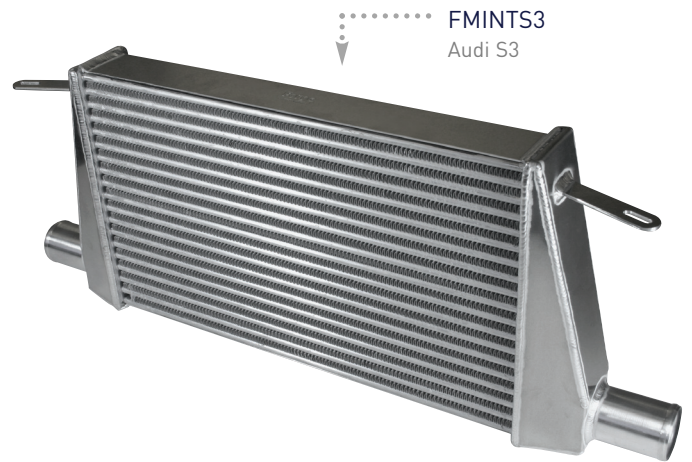
uk [www.forgemotorsport.co.uk](http://www.forgemotorsport.co.uk)

usa [www.forgemotorsport.com](http://www.forgemotorsport.com)



# INTERCOOLERS

INTERCOOLERS PART NUMBER	DESCRIPTION
FMINTA3FS	Audi A3 Front Mounting TWINtercooler 2.0 FSiT
FMINTS3FS	Audi S3 Front Mounting TWINtercooler 2.0 FSiT
FMINTS3	Audi S3 Front Mounting Intercooler Kit
FMINTTT180	Audi TT 180 FMIC
FMINTTT225	Audi TT 225 FMIC
FMINTFSITT	Audi TT 2.0 FSiT TWINtercooler
FMINTR56	BMW Mini (R56) Cooper S Turbo Upgraded Intercooler
FMMININT	BMW Mini Upgraded Air To Air Intercooler Kit
FMINT094	Fiat Uno Turbo 1.3
FMINT095	Fiat Uno Turbo 1.4
FMINT097	Ford Cosworth - RS 500 Style 2/4WD / Escort Cosworth
FMINT099	Ford Escort RS Turbo S1 Uprated (exchange)
FMINT098	Ford Escort RS Turbo S2 Twin Core
FMINTFSTI	Ford Focus ST 225 Front Mounting Intercooler
FMINTFOCR	Ford Focus ST 225 Large Race Intercooler
FMINT108	Ford RS 200
FMINT103	Lancia Delta/Integrale/Evo/16v
FMINTEX	Lotus Exige S Upgraded Intercooler
FMINTCZT	Mitsubishi Colt CZT Intercooler
FMINTEVO	Mitsubishi Evo IV/V/VI
FMINTGTI	Nissan GTi-R Front Mount (Cooler Only)
FMINTGTI2	Nissan GTi-R Front Mount & Full Pipe Run
FMINT100	Renault 5 GT Turbo Twin Core Uprated
FMINT100A	Renault 5 GT Turbo Single Core Uprated
FMINT100B	Renault 5 GT Turbo Exchange (Up To Twin Core)
FMINTR5T	Renault 5 GT Turbo FMIC Kit
FMINTRM	Renault Megane 225 FMIC
FMINT9320	Saab 93 SS/SC 1.8/2.0T Intercooler
FMINT9328	Saab 93 SS/SC 2/8V6 Intercooler
FMINT9520	Saab 95 2.0/2.3T Intercooler
FMINTALT	Seat Altea 2.0 FSiT TWINtercooler Kit
FMINTLFS	Seat Leon 2.0 FSiT TWINtercooler Kit
FMIBFMIC	Seat Ibiza Mk3 1.8T FMIC
FMIB4FR	Seat Ibiza Mk4 1.8T FMIC
FMINT100PD	Seat Ibiza Mk4 PD100 Diesel FMIC
FMINTSIPD	Seat Ibiza Mk4 PD130 Diesel FMIC
FMSEAFMIC	Seat Leon FMIC
FMINTLCR	Seat Leon Cupra R FMIC (1.8T)
FMINTFAB	Skoda Fabia 130 Diesel FMIC Kit
FMSKOFMIC	Skoda Octavia 1.8T FMIC
FMINTOFS	Skoda Octavia 2.0 FSiT TWINtercooler Kit
FMINTMK4F	VW Golf Mk4 1.8T FMIC
FMINTMKPD	VW Golf Mk4 130PD Intercooler
FMINTMK5	VW Golf Mk5 2.0 FSiT FMIC TWINtercooler
FMINT14TS	VW Golf Mk5 GT 1.4 Intercooler
FMINTMK4S	VW Golf/Seat Leon Side Mount
FMINTB6PAS	VW Passat FSiT B6 TWINtercooler
FMINTPOLO	VW Polo Mk4 1.8T Intercooler
FMINTSCI	VW Scirocco 2.0 TSi Intercooler

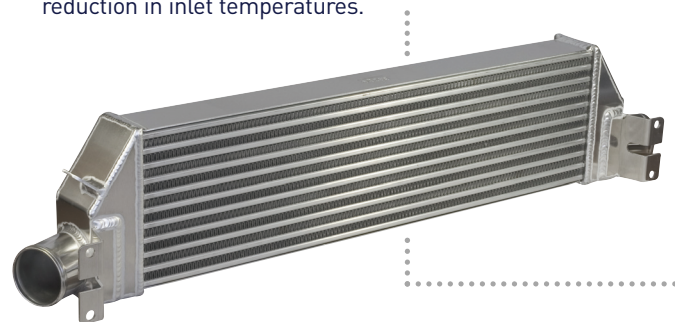


**FMINT098**  
Ford Escort RS Turbo  
S2 twin core



## FMINTMK5

This ground breaking "TWINtercooler" innovation features our unique twin-core design which has added greater efficiency throughout the entire RPM band beyond that of a single core setup, We have achieved this by using the latest core technology with high flow end tank designs to achieve a huge reduction in inlet temperatures.



# INTERCOOLERS

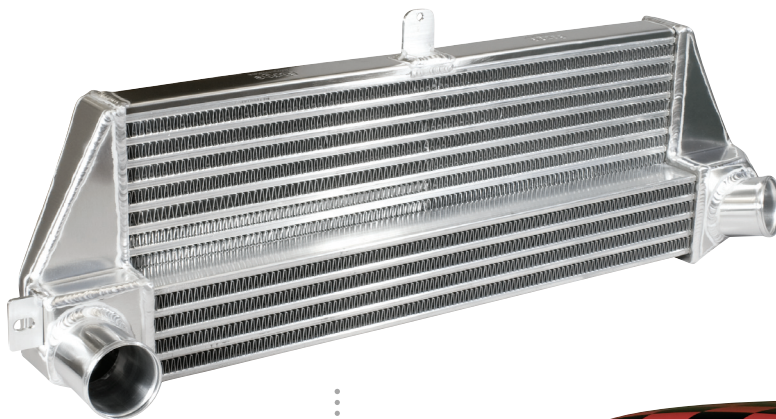
## Forge Motorsport have spent many years researching and developing their own range of intercoolers.

Engine power output is influenced by the charge air temperature, the higher the charge air temperature is, the less power the engine will produce. So in warm climatic conditions or when the turbo is producing higher boost pressures an original fitment intercooler may limit the engine output. By the installation of a more efficient intercooler, it is possible to cool the charge air temperature further, resulting in more power, or to at least maintain the power that would otherwise be lost. This can be more noticeable where the engine has been modified which often takes the original fitment intercoolers out of their optimum design criteria.

Forge Intercoolers are designed to improve both the power and efficiency of a turbocharged application by rapidly reducing inherent heat levels of the compressed intake air charge before entering the engine. Pressurised air

from the turbo is passed through the core allowing heat to dissipate into the cool ambient air that flows over the cores and fins, this cools the charge air resulting in denser air entering the combustion chamber. Correct matching of core design to the application keeps the overall pressure drop across the system to a minimum whilst achieving a high reduction in the charge air temperature without inducing unwanted turbo lag characteristics. An open core design allows minimum resistance to the air passing through the unit so as not to create significant problems if an oil cooler or radiators are mounted behind. Using high tech welding and cutting edge equipment we produce quality intercoolers at cost effective prices.

We have many sizes available to cover universal and custom applications. All Forge intercoolers are constructed and manufactured according to rigorous quality standards and verified by our in-house test & development facilities. All production systems operate according to the ISO 9001:2000 standards.



**FMINTR56**  
BMW Mini (R56) Cooper S  
Turbo upgraded intercooler

## FMINTR56

For the 2007 onwards model (R56) BMW Mini Cooper S Turbo we have developed a more efficient intercooler. As a reduction in intake air temperature increases the density of the charge mixture within the combustion cylinder any temperature reductions will equate to more power. This intercooler is constructed using a combined 80/40mm high thermal efficiency core, with a 250% larger surface area and a 125% thicker base core, to achieve the best possible results.

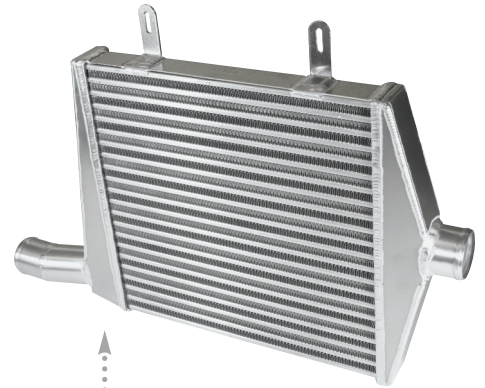


# INTERCOOLERS



## FMINT097

This RS500 styled intercooler has received much praise for its amazing performance. It is suitable in various configurations to fit the 2 and 4 wheel drive Sierra and Escort Cosworth models



## FMINTFAB

Skoda Fabia 130  
Diesel FMIC Kit

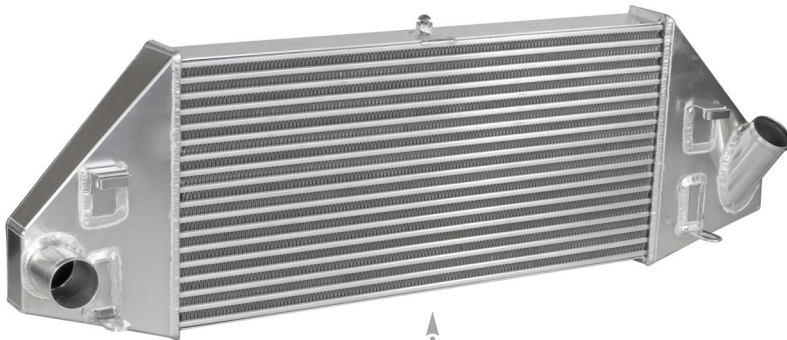
## FMINT100A

Renault 5 GT Turbo  
single core uprated



## FMINT100

Renault 5 GT Turbo  
twin core uprated



## FMINTFSTI

Focus ST 225



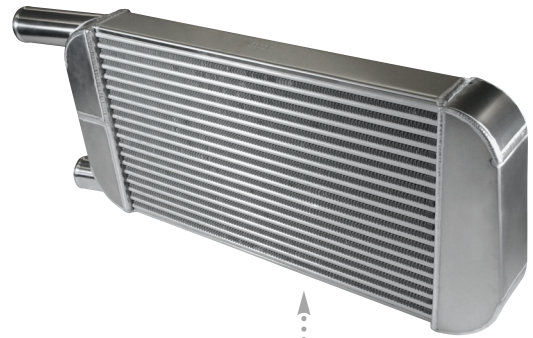
## FMINTIB

Seat Ibiza 1.8T & PD

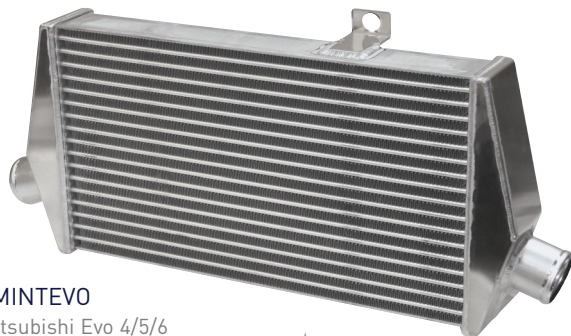
# INTERCOOLERS



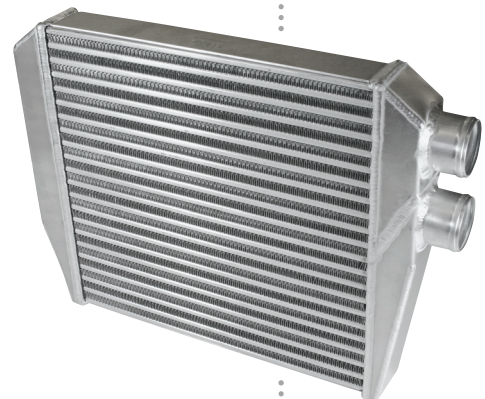
**FMINTLCR**  
Seat Leon Cupra R



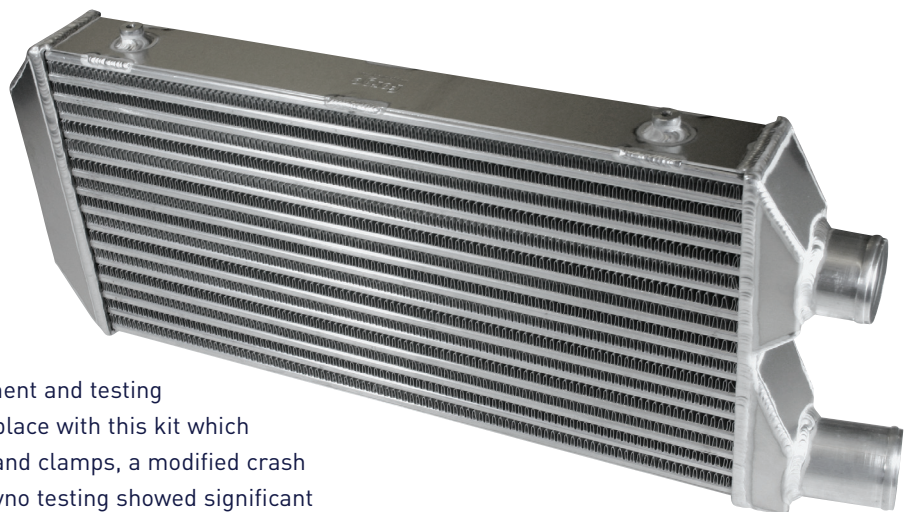
**FMSEAFMIC**  
Seat Leon 1.8T Cupra



**FMINTEVO**  
Mitsubishi Evo 4/5/6



**FMINT100PD**  
Seat Ibiza Diesel



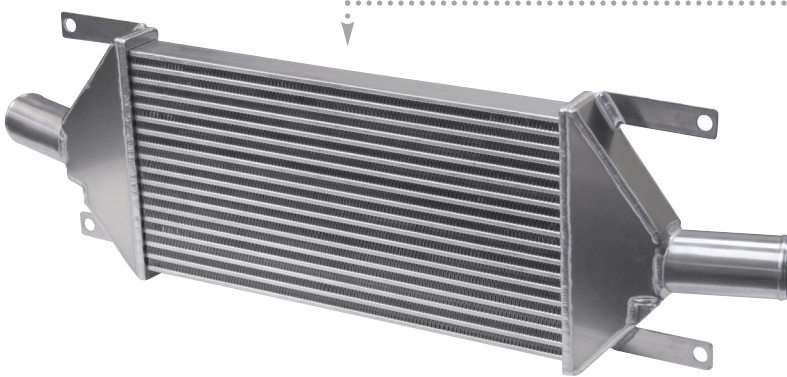
## **FMINTMK4F**

We believe that after extensive development and testing we have the best product in the market place with this kit which contains the intercooler, silicone hoses and clamps, a modified crash bumper, in fact all the parts required. Dyno testing showed significant drops in inlet temperature over the OEM side mounting intercooler of up to 15 degrees C with no loss of boost pressure

# INTERCOOLERS

## FMINTGTI2

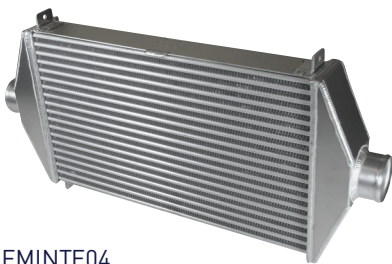
The Nissan GTi-R front mount intercooler kit contains all the pipework necessary and once installed allows the user to retain the air conditioning and the windscreen washer reservoir. This kit is the market leader.



## FMINT225

Available to fit the Mk1 225BHP models with all the hoses and mountings and with a replacement intake manifold for the 180 and 150BHP models.

## Universal Intercoolers.....



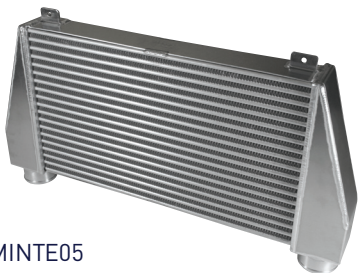
FMINTE04



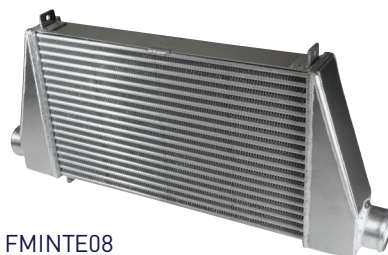
FMINTE06



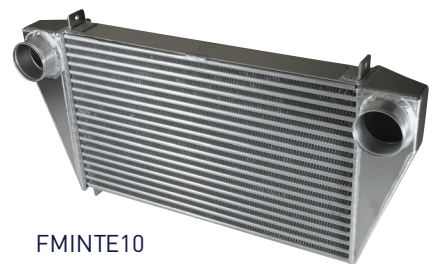
FMINT306



FMINTE05



FMINTE08



FMINTE10



# CUSTOM/UNIVERSAL FIT INTERCOOLERS

**Forced induction (compression of inlet air) produces heat. Heat can reduce power thus negating some of the benefits of forced induction in the first place.**

Incorporating an intercooler between the compressor and the plenum chamber greatly reduces the adverse effects of elevated air inlet temperatures.

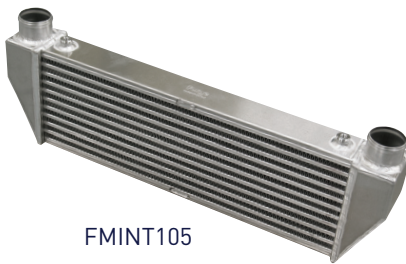
Forge Motorsport's range of universal intercoolers begin with efficient cores sized to fit many forced induction applications. From there, a wide selection of end tank configurations offer numerous installation solutions. Using the highest quality cores, hand fabricated and welded by highly skilled craftsmen, our intercoolers offer excellent thermal properties, flow characteristics, minimal pressure drop and high volumetric efficiency.

This is all at a price considerably lower than one might expect to pay for intercoolers with this level of quality, size and performance. We can also offer custom designed intercoolers manufactured to your specifications and at prices well below what other manufactures charge for 'off the shelf' designs. Contact us for more details.

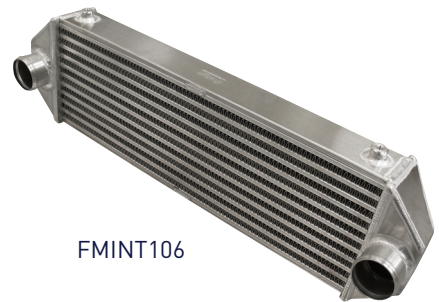
Part Number	Core Dimensions L x W x H mm (in)	Overall Dimensions L x W x H mm	Available Tube Diameters mm (in)
<b>100 series</b>			
FMINT104	500 x 60 x 175 (19.69 x 2.37 x 6.89)	680 x 80 x 200	51/57/63.5mm (2.0/2.25/2.5in)
FMINT105	500 x 60 x 175 (19.69 x 2.37x6.89)	650 x 80 x 223	51/57/63.5mm (2.0/2.25/2.5in)
FMINT106	500 x 60 x 175 (19.69 x 2.37x6.89)	650 x 115 x 200	51/57/63.5mm (2.0/2.25/2.5in)
FMINT107	500 x 60 x 175 (19.69 x 2.37 x 6.89)	665 x 115 x 200	51/57/63.5mm (2.0/2.25/2.5in)
FMINT108	500 x 60 x 175 (19.69 x 2.37 x 6.89)	680 x 80 x 200	51/57/63.5mm (2.0/2.25/2.5in)
FMINT109	500 x 60 x 175 (19.69 x 2.37 x 6.89)	680 x 80 x 200	51/57/63.5mm (2.0/2.25/2.5in)
<b>200 series</b>			
FMINT204	500 x 80 x 175 (19.69 x 3.15 x 6.89)	680 x 90 x 200	63.5/70/76mm (2.5/2.75/3in)
FMINT205	500 x 80 x 175 (19.69 x 3.15 x 6.89)	670 x 90 x 223	63.5/70/76mm (2.5/2.75/3in)
FMINT206	500 x 80 x 175 (19.69 x 3.15 x 6.89)	670 x 125 x 200	63.5/70/76mm (2.5/2.75/3in)
FMINT207	500 x 80 x 175 (19.69 x 3.15 x 6.89)	675 x 125 x 200	63.5/70/76mm (2.5/2.75/3in)
FMINT208	500 x 80 x 175 (19.69 x 3.15 x 6.89)	680 x 90 x 200	63.5/70/76mm (2.5/2.75/3in)
FMINT209	500 x 80 x 175 (19.69 x 3.15 x 6.89)	680 x 90 x 200	63.5/70/76mm (2.5/2.75/3in)
<b>300 series</b>			
FMINT304	600 x 60 x 295 (23.62 x 2.37 x 11.61)	780 x 80 x 320	51/57/63.5mm (2.0/2.25/2.5in)
FMINT305	600 x 60 x 295 (23.62 x 2.37 x 11.61)	750 x 80 x 343	51/57/63.5mm (2.0/2.25/2.5in)
FMINT306	600 x 60 x 295 (23.62 x 2.37 x 11.61)	750 x 115 x 320	51/57/63.5mm (2.0/2.25/2.5in)
FMINT307	600 x 60 x 295 (23.62 x 2.37 x 11.61)	765 x 115 x 320	51/57/63.5mm (2.0/2.25/2.5in)
FMINT308	600 x 60 x 295 (23.62 x 2.37 x 11.61)	780 x 80 x 320	51/57/63.5mm (2.0/2.25/2.5in)
FMINT309	600 x 60 x 295 (23.62 x 2.37 x 11.61)	780 x 80 x 320	51/57/63.5mm (2.0/2.25/2.5in)
<b>E series</b>			
FMINTE04	485 x 60 x 285 (19.1 x 2.4 x 11.5)	595 x 290 x 80	51/57/63/70/76 mm
FMINTE05	485 x 60 x 285 (19.1 x 2.4 x 11.5)	635 x 290 x 80	51/57/63/70/76 mm
FMINTE06	485 x 60 x 285 (19.1 x 2.4 x 11.5)	635 x 290 x 80	51/57/63/70/76 mm
FMINTE08	485 x 60 x 285 (19.1 x 2.4 x 11.5)	595 x 290 x 80	51/57/63/70/76 mm
FMINTE10	485 x 60 x 285 (19.1 x 2.4 x 11.5)	635 x 290 x 80	51/57/63/70/76 mm



FMINT104



FMINT105



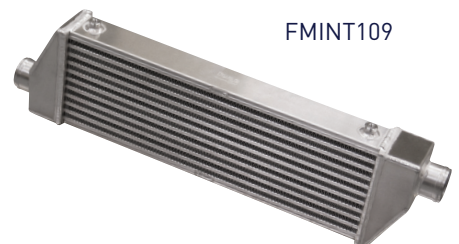
FMINT106



FMINT107



FMINT108



FMINT109

# VALVES

**Forge Motorsport are the largest manufacturer of aftermarket valves in Europe and have been manufacturing and supplying the highest quality blow off valves and diverter valves for many years. We are proud to supply many OEM dealers and competition race teams around the world.**

Forge offer one of the largest selections of aftermarket valves available on the market today. Whether you own a VW, Audi, Mitsubishi or Subaru and you are looking for the exciting, loud, whooshing rally sound or the most efficient type of diverter valve, Forge have a valve for your application. Many of the Forge valves are designed to fit in place of the original factory valves, giving the customer the simplicity of an easy and direct fitment with improved valve performance.

Forge valves are suitable for most cars with a MAF (mass air flow sensor) and will not cause any engine idling or stalling problems due to the revolutionary and often imitated twin piston, twin spring internal design. The Forge valves are an excellent upgrade to most turbo and supercharger applications.

If you require a valve for an application that is not listed please contact us and we will be pleased to assist you with your request.

VALVES - NEW FOR 2009	
PART NUMBER	DESCRIPTION
FMDVMCSV	BMW Mini R56 Cooper S Vacuum Operated Valve
FMDVBM35	BMW 135/335/535 Twin Valve Kit
FMBSPLTR	Mitsubishi Colt/Evo Combined Recirc/Blow Off Valve
FMDV996	Porsche 996 Turbo Piston Valve
FMDV997	Porsche 997 Turbo Piston Valve
FMWRX3	Subaru Impreza 2008 WRX GR Recirculation Valve
FMWRX301	Subaru Impreza 2008 WRX GR Blow Off Valve



## FMDVSPLTR - RECIRCULATION AND BLOW OFF VALVE

The Splitter is a truly remarkable valve that gives a combination of blow off and recirculation valve operation all at the same time and has been specifically designed for the many VAG 1.8T applications. This means you get all the noise of the blow off valve whilst retaining the compatibility with the recirculation requirements of the engine management system. As a bonus we also offer the ability to convert the valve to recirculation only mode for those times when stealth running is required.



**FMFSITV**  
VAG 2.0 FSiT closed loop  
dump / diverter valve



**FMDVSUPR**  
SuperSize piston ram  
dump valve / BOV

VALVES PART NUMBER	DESCRIPTION	TYPE	OUTLET DIMENSION
FMDV001	Fast Road Dump Valve	Diaphragm	25mm (1") bottom
FMDV001A	Fast Road Dump Valve with Adjustable Side Vacuum Connection	Diaphragm	25mm (1") bottom
FMDV001GTI	Single Piston Dump Valve	Piston	25mm (1") bottom
FMDV002	Competition Dump Valve	Diaphragm	25mm (1") bottom
FMDVF003	Competition Dump Valve (With Filter)	Diaphragm	25mm (1") bottom
FMDV004	Twin Piston Dump Valve	Piston	25mm (1") bottom
FMDVF005	Piston Dump Valve (With Filter)	Piston	25mm (1") bottom
FMDV006	Piston Closed Loop Dump Valve	Piston	25mm (1") side/bottom
FMCL007P	Recirculation Valve	Piston	25mm (1") side/bottom
FMCL007PA	Recirculation Valve With Adjustable Side Vacuum Connection	Piston	25mm (1") side/bottom
FMDVRSR	Type RS Valve – Recirculating Single Piston	Piston	Various
FMDVRSA	Type RS Valve – Blow Off Twin Piston	Piston	Various
FMDVRSK	Type RS Valve and Multi Fitment Kit Blow Off or Recirculation	Piston	Various
FMDVSUB01	Subaru Impreza MY 01-06 New Age & STi GR Dump Valve	Dual Piston	Flange Mount
FMDVSUB03	Subaru STI MY 01-06 Recirculating Valve	Piston	Flange Mount
FMDVS013B	Subaru Impreza MY 93-95 Alloy Original Replacement Valve	Diaphragm	20mm (8/10") both
FMDVK013A	Subaru Impreza MY 93-95 Dump Valve With Fitting Kit	Dual Piston	25mm (1") bottom
FMDVK013B	Subaru Impreza MY 93-95 Dump Valve (With Filter) & Fitting Kit	Dual Piston	25mm (1") bottom
FMDVV4010	Subaru Impreza V4 Piston Dump Valve	Dual Piston	34mm (1 3/8") bottom
FMDVV4010A	Subaru Impreza V4 Piston Dump Valve (With Filter)	Dual Piston	34mm (1 3/8") bottom
FMDVV4011	Subaru Impreza V4 Piston Recirculation Valve	Piston	34mm (1 3/8") side/bottom
FMDVV5012	Subaru Impreza V5 Piston Dump Valve (Flange Mounted)	Dual Piston	Flange Mount
FMDVV5012A	Subaru Impreza V5 Piston D/V & Filter (Flange Mounted)	Dual Piston	Flange Mount
FMDVV5013	Subaru Impreza V5 Piston Recirculation Valve (Flange Mounted)	Piston	Flange Mount
FMDVMSP01	Mazdaspeed Protégé Dump Valve & Fitting Kit	Dual Piston	25mm (1") bottom
FMDVMSP02	Mazdaspeed Protégé Replacement Recirculation Valve	Piston	20mm (8/10") both
FMDVECL101	Mitsubishi Eclipse 1st Gen Dump Valve / BOV	Dual Piston	Flange Mount
FMDVECL102	Mitsubishi Eclipse 1st Gen Recirculation Valve	Piston	Flange Mount
FMDVECL201	Mitsubishi Eclipse 2nd Gen Dump Valve / BOV	Dual Piston	34mm (1 3/8") bottom
FMDVECL202	Mitsubishi Eclipse 2nd Gen Recirculation Valve	Piston	34mm (1 3/8") side/bottom
FMDVEV014	Mitsubishi Evo 4/5/6/7/8 Piston Dump Valve	Dual Piston	34mm (1 3/8") bottom
FMDVEV014A	Mitsubishi Evo 4/5/6/7/8 Piston Dump Valve (With Filter)	Dual Piston	34mm (1 3/8") bottom
FMDVEV015	Mitsubishi Evo 4/5/6/7/8 Recirculation Valve	Piston	34mm (1 3/8") side/bottom
FMDVGT014	Mitsubishi GTO Piston Dump Valve	Dual Piston	34mm (1 3/8") bottom
FMDVGT014A	Mitsubishi GTO Piston Dump Valve (With Filter)	Dual Piston	34mm (1 3/8") bottom
FMDVGT015	Mitsubishi GTO Recirculation Valve	Piston	34mm (1 3/8") bottom & 28mm (1/10") side
FMDVW034	General purpose 34mm Weld On Piston Valve	Dual Piston	34mm (1 3/10") bottom
FMGTIR016	Nissan GTi-R Atmospheric Dump Valve	Dual Piston	34mm (1 3/8") bottom
FMGTIR016A	Nissan GTi-R Atmospheric Dump Valve (With Filter)	Dual Piston	34mm (1 3/8") bottom
FMGTIR017	Nissan GTi-R Recirculation Ram Dump Valve	Piston	34mm (1 3/8") bottom & 28mm (1/10") side
FFMSCDVK	Smart Atmospheric Dump Valve & Fitting Kit	Dual Piston	25mm (1") bottom
FMFK048	GM Astra G Type, Zafira, VX220 Dump Valve And Fitting Kit	Dual Piston	25mm (1") bottom
FMFK049	Volvo S40 / V40 Turbo Dump Valve And Fitting Kit	Dual Piston	Screw Mount
FMFK050	Volvo 850 T5 / S70 / V70 & Early V40 Dump Valve And Fitting Kit	Dual Piston	25mm (1") bottom
FMFK051	GM Vectra Dump Valve And Fitting Kit	Dual Piston	25mm (1") bottom
FMDVFSIT	Blow Off Adaptor for VAG 2.0 Litre FSiT Turbo Engines	Adaptor	Sandwich Mount
FMSITA	Switchable Blow Off Adaptor for 2.0 Litre FSiT Engines	Adaptor	Sandwich Mount
FMFSITR	Blow Off Adaptor for VAG 2.0 Litre FSiT With Remote Valve	Adaptor	Sandwich Mount
FMFSITV	Replacement Piston Valve for VAG 2.0 Litre FSiT Engines	Piston	
FMFSITVR	Piston Valve for VAG 2.0 Litre FSiT Engines With Remote Valve	Piston	
FMDVP207	Blow Off Adaptor for Peugeot 207 Turbo Engines	Adaptor	Sandwich Mount
FMDVMCS	Blow Off Adaptor for BMW Mini (R56 Model) Cooper S	Adaptor	Sandwich Mount

# VALVES



## FMDV001

An atmospheric dump valve / BOV suitable for all turbo cars without an Air Flow Meter. Made from billet alloy and using a diaphragm, this valve provides excellent response times leading to faster acceleration times.



## FMDVSUB01

Impreza MY 01 new age dump valve / BOV



## FMDVF003

For applications where the valve may be subject to dusty conditions a filter is used to prevent particles entering the valve.



## FMFSITA

A switchable valve for the 2.0 litre FSi turbo engine which allows a choice of Blow off (loud) Blow off and partial recirculation (intermediate) or total recirculation (quiet). This gives you the choice of exactly how loud you wish your valve to be.



## FMDVFSIT

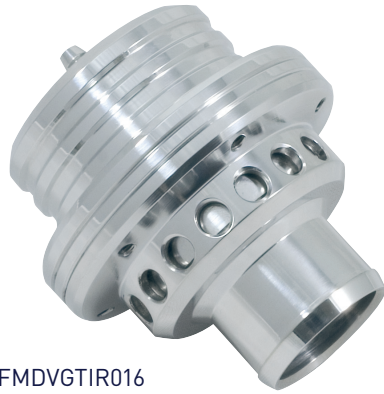
With the introduction of the VAG 1.8/2.0 litre FSi turbo engine, and the procurement of our own development/project car, we have developed a patented atmospheric blow-Off valve adapter specially designed to fit this application. Simple in execution, yet offering the desirable atmospheric blow-off valve sounds, this product has been designed to be fully compatible with the Bosch ME9 engine management systems employed on the following vehicles: Audi A3 2.0T FSi, Audi B7, A4 1.8/2.0T FSi, Volkswagen MK5 Golf GTI/Jetta GLI 2.0T FSi and Seat 2.0 FSiT.





### FMDVW034

This twin Piston Blow-off valve is specifically designed for those that wish to install the valve by welding direct to a hard pipe installation, intake manifold, intercooler or similar. The 34mm adaptor which screws to the valve is available in alloy or stainless steel.



**FMDVGTIR016**  
Nissan GTi-R atmo ram  
dump valve / BOV



**FMDV5012**  
Impreza V5 piston ram dump  
valve / BOV (flange mounted)



**FMGTIR017**  
Nissan GTi-R  
closed loop dump /  
diverter valve



### FMDVRS

The Forge Type RS valve has been specifically designed and engineered, to offer extreme flow rate capability, where other valves are just not up to it. Often when engines have been tuned by installing larger turbos or even software upgrades, improved turbo response can be achieved by fitting the Type RS valve which has the greater internal mass air flow specification utilising an amazing 50mm (2") bore. For fine tuning there is a variable spring preload incorporated and to ease installation a 360 degree adjustable vacuum hose connector. With a choice of inlet and outlet connections the Type RS valve can be matched to your engine perfectly. Available in atmospheric and recirculating configuration with interchangeable inlet and outlet ports; sizes are from 25mm (1") to 50mm (2") allowing for massively optimal air flow for your application.



# VALVES



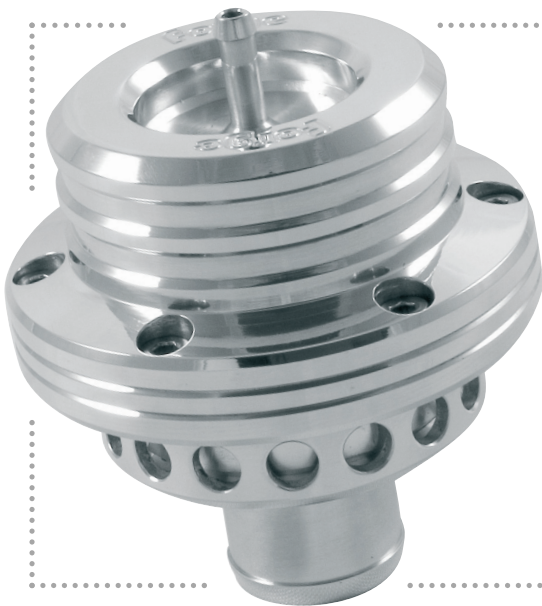
## FMDV006

This single piston valve is suitable for all turbo cars with an Air Flow Meter. With a bolted cylinder head style top and heavy duty construction you can be certain of its reliability and performance.

**FMDVF005**  
Piston ram dump  
valve / BOV  
(with filter)

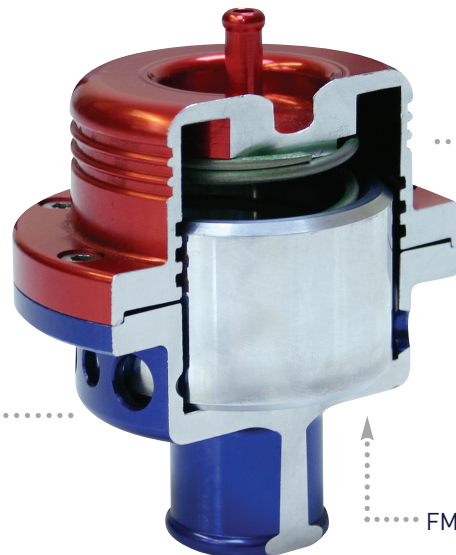


**FMDVV5013**  
Impreza V5 piston ram  
closed loop dump /  
diverter valve



## FMDV004

Unlike single piston or diaphragm diverter valves, this atmospheric dump / BOV valve uses twin springs and dual pistons to prevent the valve from leaking air into the intake system when at idle.



FMDV004 cutaway

## FMCL007P

This recirculating diverter valve dumps the charge-air back into the air intake system keeping external noise to a minimum and increasing throttle response. This valve is a suitable replacement for many engines that utilise this style of plastic Bosch valve, such as the VAG 1.8T / 2.7, Saab and Porsche turbo engines. This valve offers greater durability with its all alloy construction.



from this...



to this...



**FMDVMSP02**  
Mazdaspeed Protégé  
OEM replacement  
bypass / diverter valve

## FMDVGT4

This single piston recirculation valve is the optimum replacement for the original valve on the Toyota GT4, with the added benefit that it can be tuned to suit those vehicles that have had upgraded software.



**FMDVP207**  
Peugeot 207 GT Turbo  
dump valve / BOV

## FMDV002

This competition atmospheric blow off valve dumps the charge-air to atmosphere creating the "Whoosh" sound most commonly associated with rally cars when the throttle is lifted.

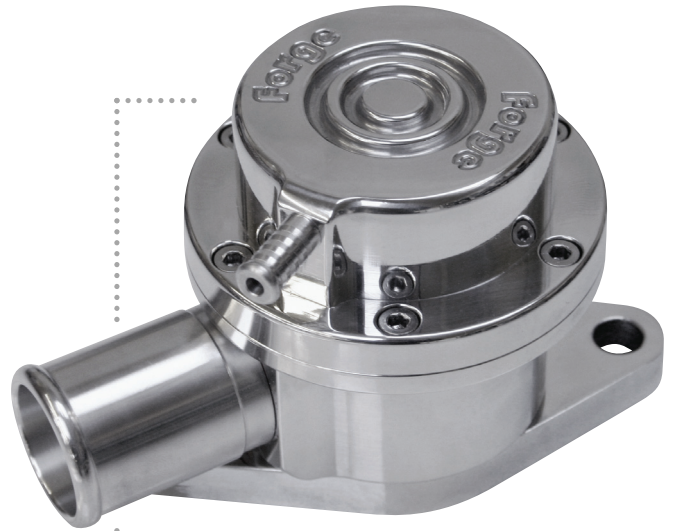


# VALVES

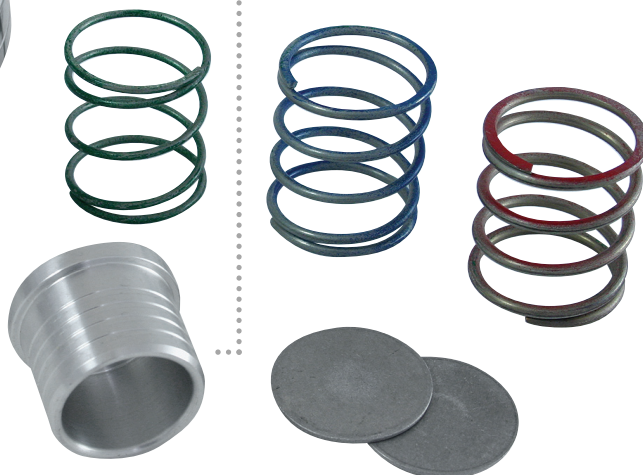
FMDVECL202  
Eclipse 2nd Gen  
bypass / diverter valve



FMDVECL102  
Eclipse 1st Gen  
bypass / diverter valve



FMDVECL201  
Eclipse 2nd Gen  
dump valve / BOV



FMDVECL101  
Eclipse 1st Gen  
dump valve / BOV







## FMDV996

These direct replacement units utilize full billet aluminum construction and a piston based design that has proved successful throughout our entire range of application specific and universal valve products. Viton brand high temp silicone o-ring are used for sealing of the piston and the valve cap, Mobil1 fully synthetic bearing grease for lubrication of the internals, and a proprietary spring rate is used to handle the widest possible range of boost pressures. The kit also includes a replacement silicone hose that is capable of withstanding greater temperatures and pressures.





**FMFK053**  
Saab 93 Turbo 210HP dump valve / BOV & fitting kit



**FMFK055**  
Nissan R32 Twin Valves & Fitting Kit



**FMDVMSP01**  
Mazdaspeed Protégé dump valve / BOV & fitting kit

VALVE FITTING KITS	
PART NUMBER	DESCRIPTION
FMFK019	Ford Escort RS Turbo
FMFK020	Renault 5 GT Turbo
FMFK021	Renault 21 Turbo
FMFK022	Ford Cosworth Cold Side
FMFK023	Ford Escort Cosworth T25 Small Turbo
FMFK024	Ford Fiesta RS Turbo
FMFK026	Fiat Uno Turbo
FMFK027	Fiat Punto GT Turbo
FMFK029	Rover 820 Turbo
FMFK030	Daihatsu Charade Turbo
FMFK031	Nissan 200SX Turbo
FMFK038	Toyota MR2 Turbo
FMFK040	Lancia Delta / HF / Integrale / Evo
FMFK042	Maestro / Montego Turbo
FMFK045	Vauxhall Cavalier / Calibra Turbo
FMFK046	Citroen Xantia Turbo (Petrol)
FMFK047	Subaru Impreza
FMFK048	Vauxhall Astra G Type, Zafira, VX220
FMFK049	Volvo S40 / V40 Turbo
FMFK050	Volvo 850 T5 / S70 / V70 & Early V40
FMFK051	Vauxhall Vectra Valve & Fitting Kit
FMFK054	Renault Megane Valve & Fitting Kit
FMFK055	Nissan R32 Twin Valves & Fitting Kit
FMFK056	Nissan R33/34 Valve & Fitting Kit
FMFK057	Mazda RX7 Twin Valves & Fitting Kit
FMFK058	Toyota Celica GT4 Valve & Fitting Kit
FMFK059	Vauxhall Astra H Type (VXR) Valve & Fitting Kit
FMDVRLK	VAG 150/180hp 1.8T Cold Side Valve Reloc. Kit
FM225DVRLK	VAG 210/225hp 1.8T Cold Side Valve Reloc. Kit
FMSCDVK	Smart Four Two Valve & Fitting Kit

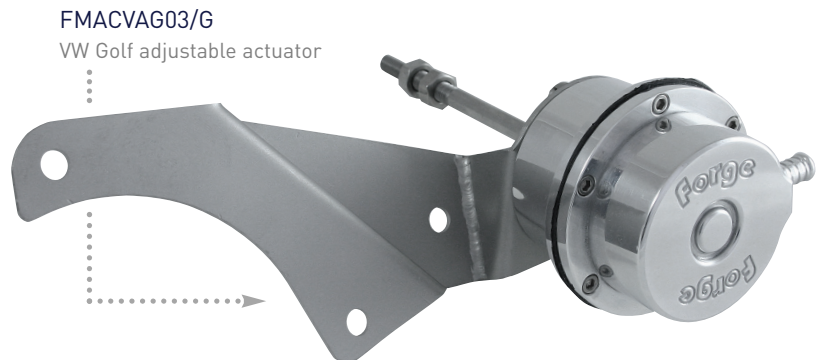
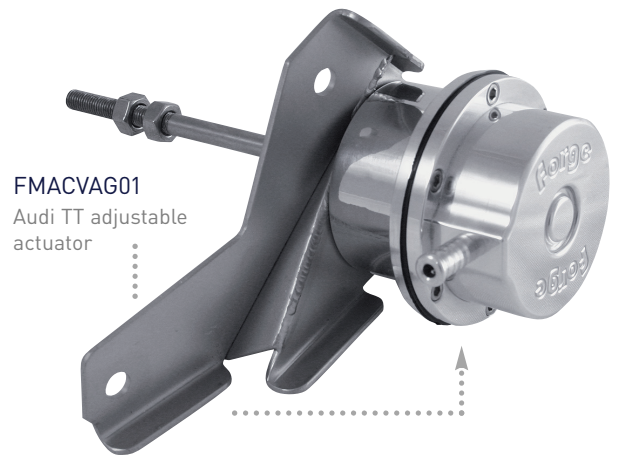
# ACTUATORS

ACTUATORS	
PART NUMBER	DESCRIPTION
FMACVAG01	Audi TT 225 Adjustable Actuator
FMACVAG02	Audi A4 Adjustable Actuator Longitudinal Engine Only
FMACVAG03/G	VW Golf 1.8T Adjustable Actuator
FMACVAG03/S	Seat Ibiza 1.8T Adjustable Actuator
FMACVAG04	VAG Diesel 90-150hp with Garret VNT Turbo
FMACVAG05	VW Golf MK5 2.0 FSiT Adjustable Actuator
FMNEONACT	Dodge Neon SRT-4 Adjustable Actuator
FMACECL01	Mitsubishi Eclipse 1st Gen & Evo 1/2 Adjustable Act.
FMACECL02	Mitsubishi Eclipse 2nd Gen Adjustable Actuator
FMEVACT	Mitsubishi Evo 4/5/6/7/8 Adjustable Actuator
FMPACEV9	Mitsubishi Evo 9 Alloy Adjustable Piston Actuator
FMPACEV10	Mitsubishi EVO 10 Alloy Adjustable Piston Actuator
FMGTOACT	Mitsubishi GTO Twin Turbo Adjustable Actuators (x 2)
FMAC900	Saab 900/9-3 1994-99 Alloy Adjustable Actuator
FMAC9000	Saab 9000/2.0T/2.3T 1994-98 Alloy Adjustable Actuator
FMAC95931	Saab 9-5 2.3T 00-05/ 9-3 Viggen 98-02/ Aero 00-02
FMAC95932	Saab 9-5 2.0T 2.3T 98-05/ 9-3 2.0T 00-02 Not Aero
FMAC9000A	Saab 9000 Aero
FMACGGT	Garrett GT Series Turbo Actuator
FMAC1SUB	Subaru Adjustable Act. (IHI VF36/37 & GDB Spec C)
FMAC2SUB	Subaru Adjustable Act. (IHI VF34 & GDB ex. Spec C)
FMAC3SUB	Subaru Adjustable Actuator (IHI VF24)
FMAC4SUB	Subaru Adjustable Actuator (TD04/TD05)
FMACREN521	Renault 5 & 21 Adjustable Actuator
FMACROV2	Rover 2.0 Turbo Adjustable Actuator
FMAC3000GT	Mitsubishi 3000GT Twin Adjustable Actuators (x 2)
FMACS14S	Nissan S14 Adjustable Actuator with Straight Rod
FMACS14B	Nissan S14 Adjustable Actuator with Bent Rod
FMACFIES	Ford Fiesta RS Alloy Adjustable Actuator
FMACESC	Ford Escort Cosworth Adjustable Actuator
FMACCOS2	Ford Sierra Cosworth 2WD Adjustable Actuator
FMACCOS4	Ford Sierra Cosworth 4WD Adjustable Actuator
FMACFRS	Ford Focus RS Adjustable Actuator
FMACGTIRS	Nissan GTi-R Adjustable Actuator Straight Rod
FMACGTIRB	Nissan GTi-R Adjustable Actuator Bent Rod
FMACVCAL	Vauxhall Calibra Adjustable Actuator
FMACLV8	Lotus V8 Adjustable Actuators (x 2)
FMACGT4	Toyota GT4 Adjustable Actuator

Our actuators feature billet construction, serviceability and full adjustability. Laser cut stainless steel brackets ensure OEM fitment and the unit is guaranteed for life! These features ensure quality & performance far exceeding the OEM.

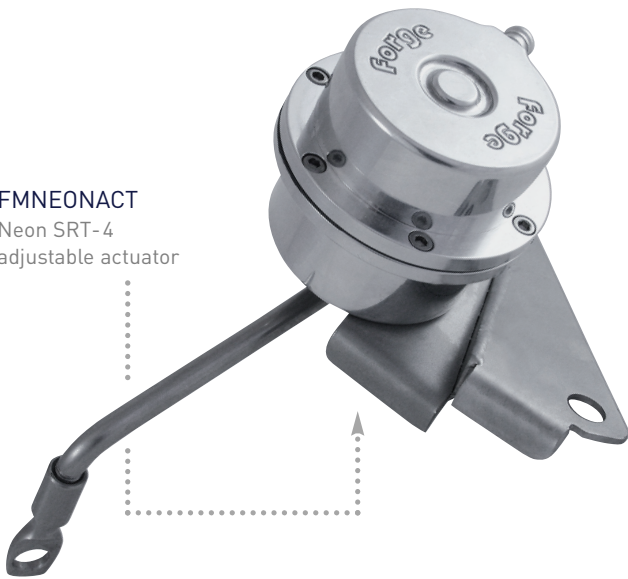
Current applications include:

Audi | Dodge | Mitsubishi | Nissan | Renault |  
Saab | Subaru | Toyota | Volvo | VW

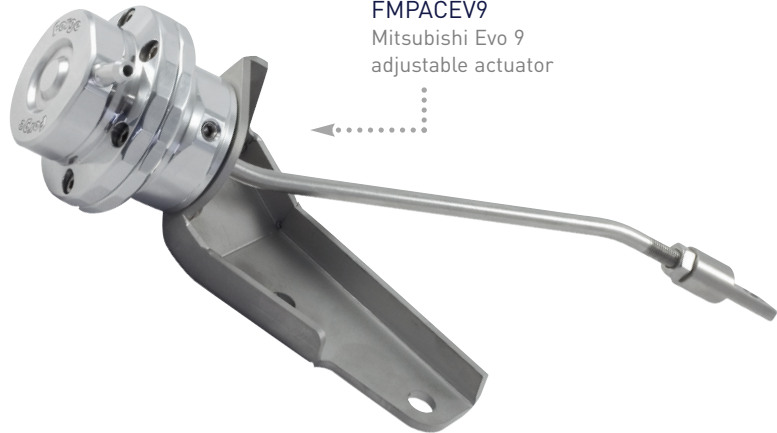


# ACTUATORS

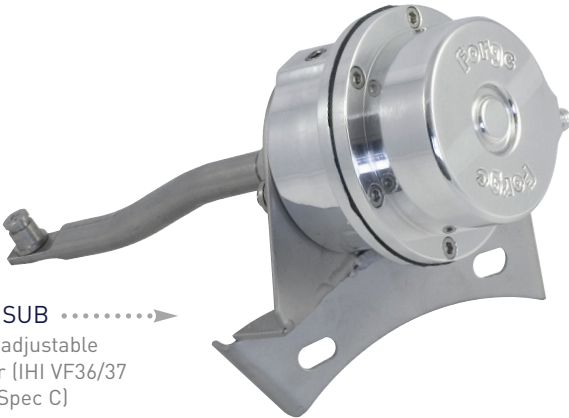
**FMNEONACT**  
Neon SRT-4  
adjustable actuator



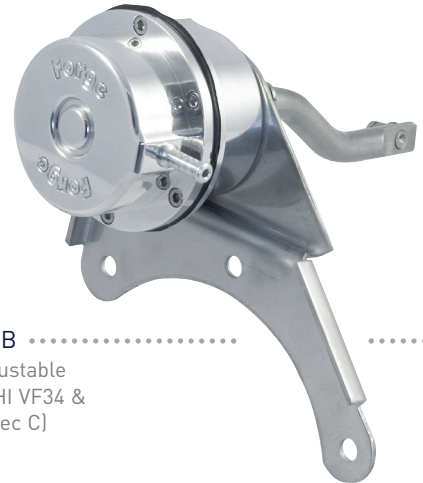
**FMPACEV9**  
Mitsubishi Evo 9  
adjustable actuator



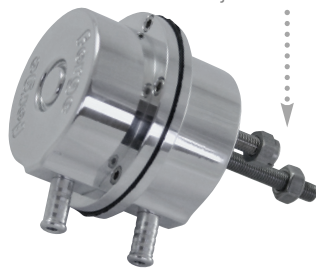
**FMAC1SUB** .....  
Subaru adjustable  
actuator (IHI VF36/37  
& GDB Spec C)



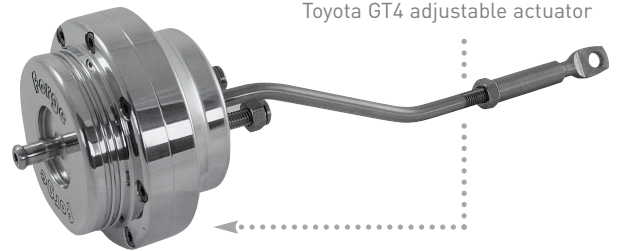
**FMAC2SUB** .....  
Subaru adjustable  
actuator (IHI VF34 &  
GDB ex. Spec C)



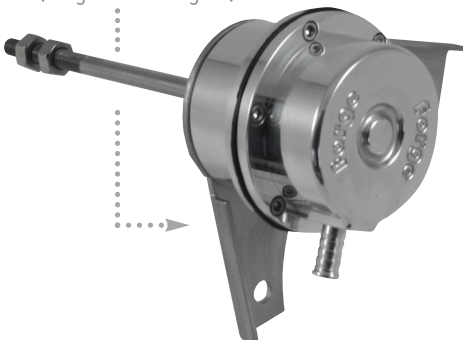
**FMREN521**  
Renault 5 GT turbo  
adjustable actuator



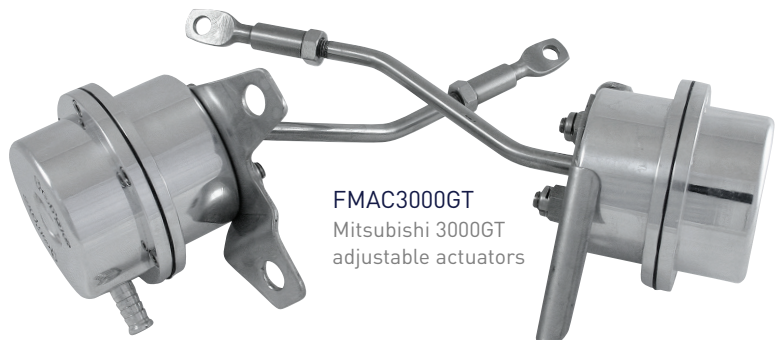
**FMACGT4**  
Toyota GT4 adjustable actuator



**FMACVAG02**  
Audi A4 adjustable actuator  
(longitudinal engine)

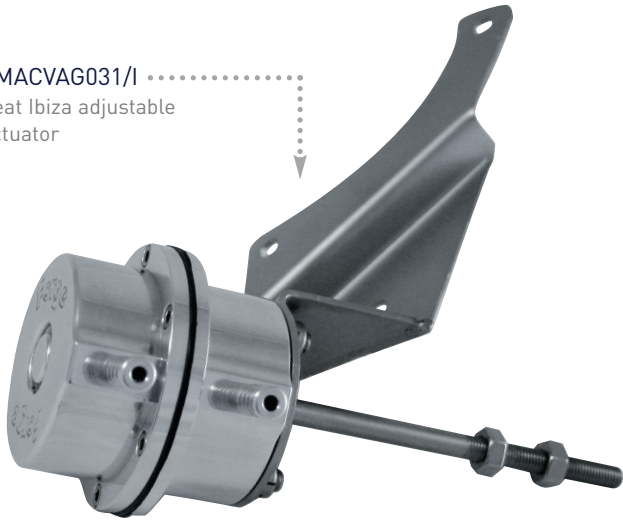


**FMAC3000GT**  
Mitsubishi 3000GT  
adjustable actuators

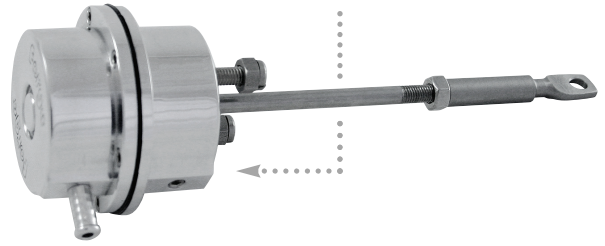


# ACTUATORS

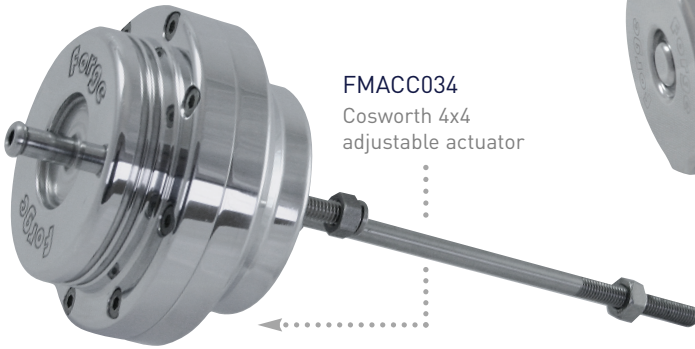
**FMACVAG031/I**  
Seat Ibiza adjustable  
actuator



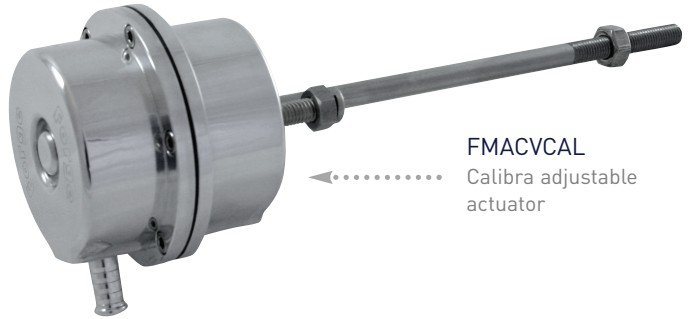
**FMACGTiR**  
Nissan GTi-R  
adjustable actuator



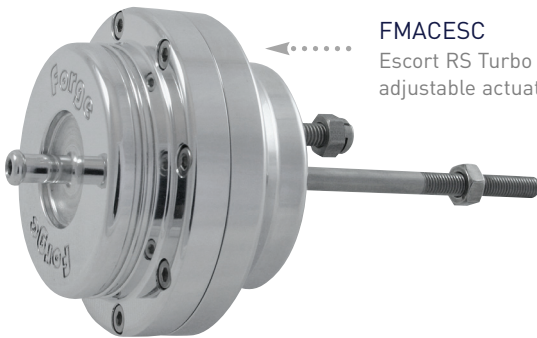
**FMACC034**  
Cosworth 4x4  
adjustable actuator



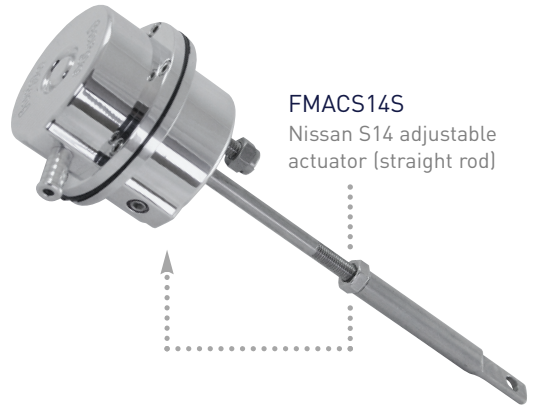
**FMACVCAL**  
Calibra adjustable  
actuator



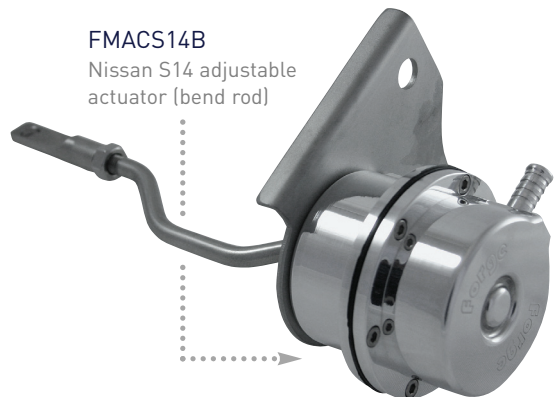
**FMACESC**  
Escort RS Turbo  
adjustable actuator



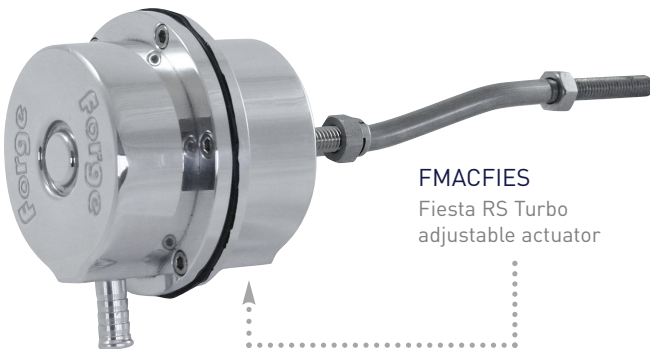
**FMACS14S**  
Nissan S14 adjustable  
actuator (straight rod)



**FMACS14B**  
Nissan S14 adjustable  
actuator (bend rod)

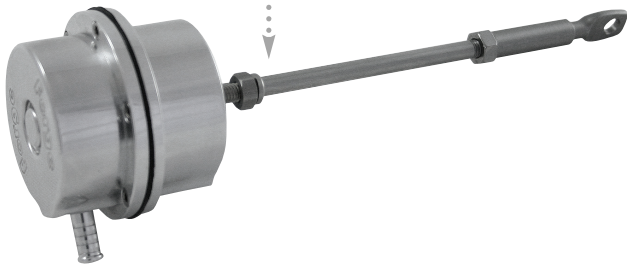


**FMACFIES**  
Fiesta RS Turbo  
adjustable actuator



# ACTUATORS

**FMAC9531**  
Saab 9-5 2.3T  
adjustable actuator



**FMAC9532**  
Saab 9-5/9-3 2.0T  
adjustable actuator



**FMASR122**  
Actuator spring  
retainer top



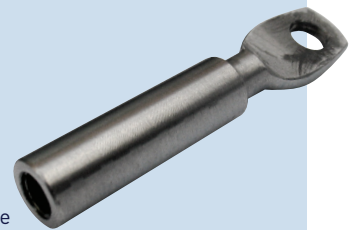
**FMAS048**  
T3 actuator  
springs



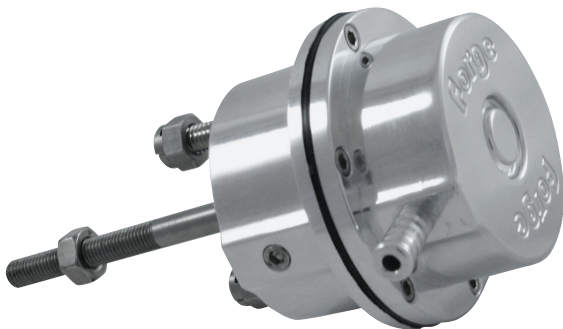
**FMAD115**  
Kevlar actuator diaphragm



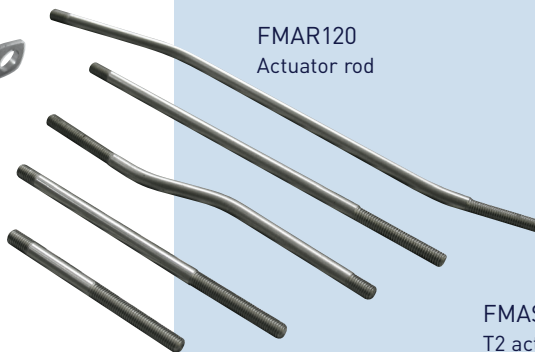
**FMTBU3**  
Universal  
turnbuckle



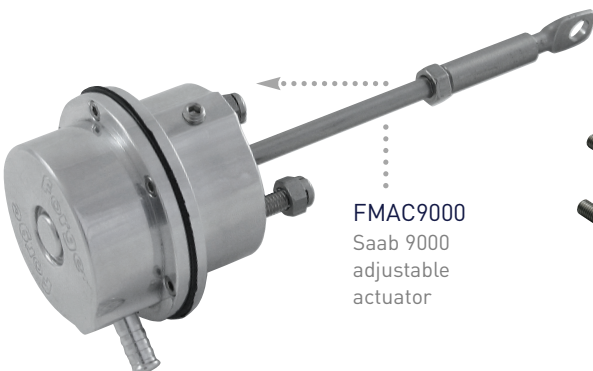
**FMACROV2**  
Rover 220  
adjustable  
actuator



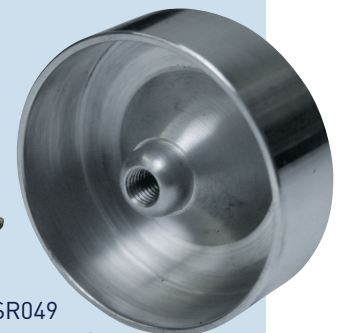
**FMAR120**  
Actuator rod



**FMAC9000**  
Saab 9000  
adjustable  
actuator



**FMASR049**  
T2 actuator spring  
retainer cap



## REPLACEMENT ACTUATOR INTERNALS

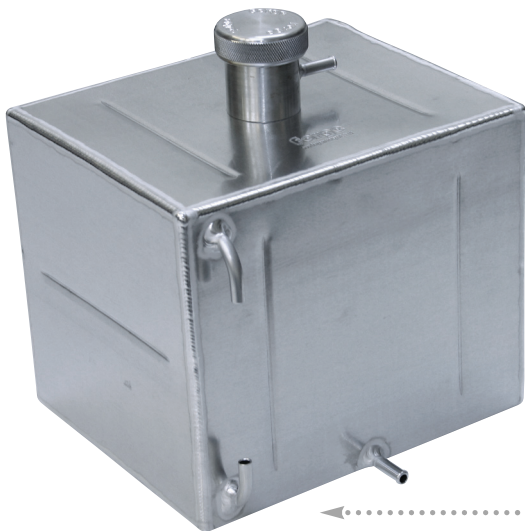
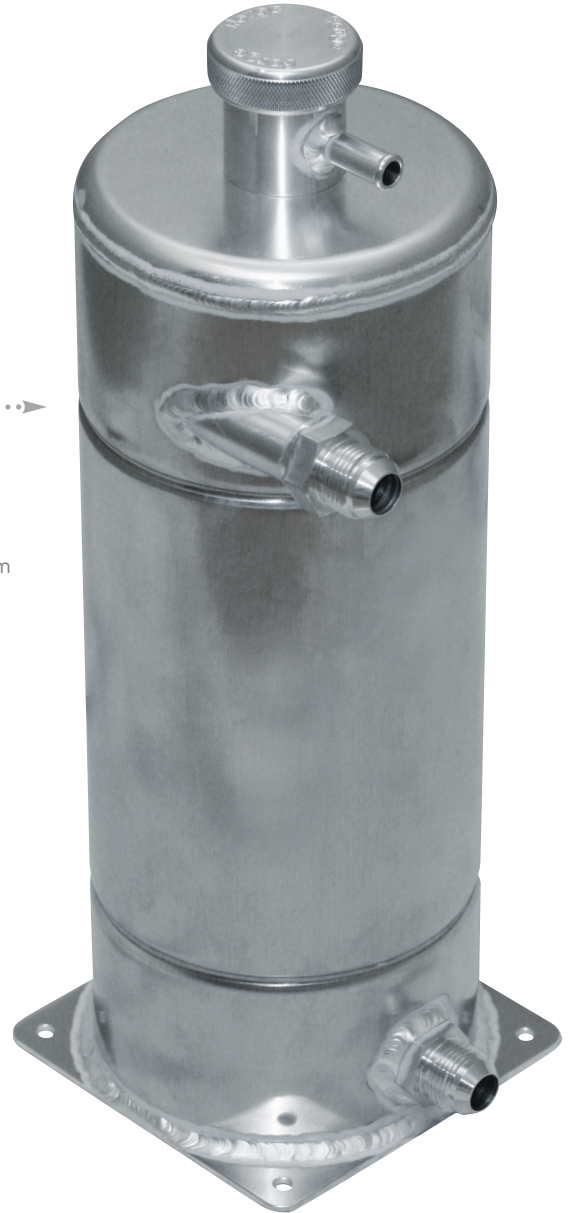
PART NUMBER	DESCRIPTION
FMACTUNP	Tuning Kit for Piston Actuators
FMACTUND	Tuning Kit for Diaphragm Actuators
FMAD115	Kevlar Actuator Diaphragm
FMAS048G	T3 Actuator Spring No 8 (7 - 10 psi)
FMAS048Y	T3 Actuator Spring No 10 (10 - 12.5 psi)
FMAS048B	T3 Actuator Spring No 12 (12.5 - 17 psi)
FMAS048R	T3 Actuator Spring No 14 (15 - 18 psi)
FMAS049G	T2 Actuator Spring No 8 (5 - 10 psi)
FMAS049Y	T2 Actuator Spring No 10 (9 - 15 psi)
FMAS049B	T2 Actuator Spring No 12 (14 - 18 psi)
FMAS049R	T2 Actuator Spring No 14 (17.5 - 20 psi)
FMAR120	Actuator Rod (various sizes)
FMTBU1	Universal Turnbuckle Type 1
FMTBU2	Universal Turnbuckle Type 2
FMTBU3	Universal Turnbuckle Type 3
FMTBU4	Universal Turnbuckle Type 4
FMTBEVO	Mistubishi Evo Turnbuckle
FMASR048	Actuator Spring Retainer Cap
FMASR049	Actuator Spring Retainer Cap
FMASR122	Actuator Spring Retainer (Top Blue)

# ALLOY TANKS

DRY SUMP TANKS	
PART NUMBER	DESCRIPTION
FMDST086	1.4 Gallon 5/8ths BSP Thread 190mm X 305mm
FMDST087	1.0 Gallon 5/8ths BSP Thread 190mm X 405mm
FMDST088	1.2 Gallon 5/8ths BSP Thread 155mm X 400mm
FMDST089	0.9 Gallon 5/8ths BSP Thread 155mm X 400mm
FMDST090	1.2 Gallon Dash 12 Male Fittings 155mm Dia X 400mm
FMDST091	0.9 Gallon Dash 12 Male Fittings 155mm Dia X 300mm
FMDST092	1.4 Gallon Dash 12 Male Fittings 190mm Dia X 305mm
FMDST093	1.9 Gallon Dash 12 Male Fittings 190mm Dia X 405mm

High quality construction, internally baffled to prevent surge and starvation, supplied with cap and fitted with a breather take off on the filler neck.

FMDST090  
1.2 Gallon Dash  
12 Male Fittings  
155mm Dia x 400mm



FMFT078  
2 Gallon  
fuel tank

FMFT076  
1 Gallon  
fuel tank



FUEL TANKS		
PART NUMBER	DESCRIPTION	
FMFT076	1 Gallon Fuel Tank	200mm x 200mm x 120mm
FMFT078	2 Gallon Fuel Tank	240mm x 200mm x 200mm
FMFT079	3 Gallon Fuel Tank	340mm x 200mm x 200mm
FMFT080	4 Gallon Fuel Tank	490mm x 150mm x 250mm
FMFT081	5 Gallon Fuel Tank	130mm x 480mm x 360mm
FMFT082	6 Gallon Fuel Tank	600mm x 150mm x 300mm
FMFT083	8 Gallon Fuel Tank	480mm x 250mm x 300mm
FMEV0FT	Evo IV/V/VI/VII/VIII Alloy Competition Fuel Tank	

Precision made alloy fuel tanks, foam filled for safety, fitted with splash trays around filler neck & sight gauge where appropriate, fuel outlets 5/16" OD and sight gauge outlets 1/4" OD.

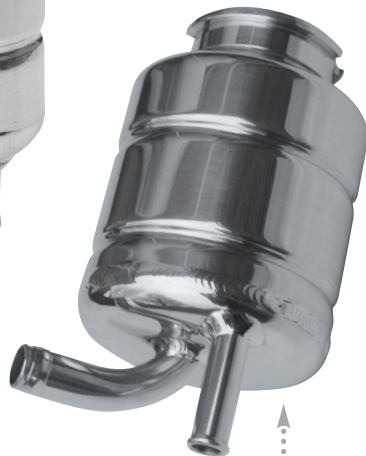
# ALLOY TANKS

## POWER ASSISTED STEERING TANKS

PART NUMBER	DESCRIPTION
FMMINPAS	BMW Mini Cooper S Alloy PAS Tank
FMPA072	Cosworth Alloy PAS Tank
FMSXPA	Citroen Saxo Alloy PAS Tank
FMPAEV6	Mitsubish Evo IV/V/VI Alloy PAS Tank
FMPAEV8	Mitsubish Evo VIII Alloy PAS Tank
FMPAGTI	Nissan GTi-R Alloy PAS Tank
FMPASUB	Subaru Impreza MY 03 WRX Alloy PAS Tank
FMPASGT4	Toyota GT4 ST185 PAS Tank



**FMMINPAS**  
BMW Mini  
Cooper S  
alloy PAS tank



**FMPASUB**  
Subaru Impreza MY 03  
WRX alloy PAS tank



**FMPAEV6**  
Mitsubishi Evo IV/V/VI  
alloy PAS tank



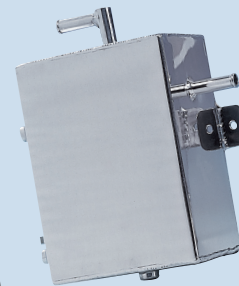
**FMSXPA**  
Citroen Saxo  
alloy PAS tank



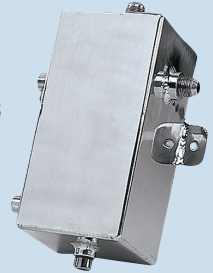
**FMPA072**  
Cosworth  
Alloy PAS Tank



**FMSP068**  
Universal water  
swirl pot



**FMCT074**  
Universal  
3 Litre  
catch tank



**FMCT073**  
Universal  
2 Litre  
catch tank

**FMSP069**  
Renault 5 GT  
Turbo water  
swirl pot



**FMPSP075**  
Petrol swirl  
pot 1.5 Litre  
Capacity



## ALLOY TANKS

PART NUMBER	DESCRIPTION
FMSP068	Universal Water Swirl Pot 2.5" O/d X 195mm
FMUNCT	Universal 0.5 Litre 80mm Dia. Catch Tank 10 /1 4mm O/d Pipes
FMUNCTCF	Universal 0.4 Litre 70mm Dia. Carbon Fibre Tank 10 /1 4mm O/d Pipes
FMCT073	Universal 2 Litre Catch Tank 0.5" O/d Pipes
FMCT074	Universal 3 Litre Catch Tank 0.5" O/d Pipes
FMPSP075	Petrol Swirl Pot 1.5 Litre Capacity

# ALLOY TANKS

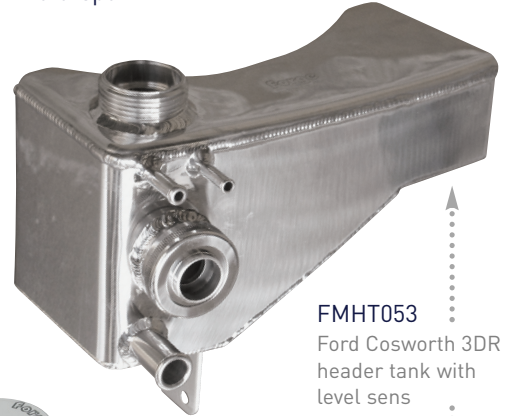
## ALLOY WATER HEADER TANKS (EXPANSION TANKS)

PART NUMBER	DESCRIPTION
FMHT063	Universal Header Tank 4" O/d X 200mm Long
FMMINHT	BMW Mini R50/R53 Cooper S Alloy Header Tank
FMHTR56	BMW Mini R56 Models (2007 on) Alloy Header Tank
FMHT053	Ford Cosworth 3dr Header Tank With Level Sens
FMHT053A	Ford Cosworth Sapphire 2WD Header Tank
FMHT053B	Ford Cosworth 4x4 Header Tank
FMHT059	Lancia Integrale Alloy Header Tank
FMHTEV6	Mitsubishi Evo IV/V/VIA Alloy Header Tank
FMHTEV8	Mitsubishi Evo VIII Alloy Header Tank
FMHT065	Rover 200/400 25/45 Header Tank
FMHT066	Lotus Elise / Exige / 340R / Rover MGF Header Tank
FMHTGTI	Nissan GTi-R Alloy Header Tank
FMHT057	Renault 5 GT Turbo Phase 1 Alloy Header Tank
FMHT058	Renault 5 GT Turbo Phase 2 Alloy Header Tank
FMHTNA	Subaru Impreza MY 01- WRX Alloy Header Tank
FMHT064T	Subaru Impreza MY 93 Alloy Header Tank
FMHT064S	Subaru Impreza V5 Alloy Header Tank

**Our tanks are hand crafted using aircraft quality low corrosion alloy.**

The connections are CNC machined and fabricated with the latest TIG welding equipment. With production controlled to ISO 9001:2000 certification you can be certain of a product fit for its purpose.

In addition, all our fuel tanks are foam filled and pressure tested making them ideal for those competing in Motorsport.



**FMHT053**  
Ford Cosworth 3DR header tank with level sens

**FMMINHT**  
BMW Mini Cooper S alloy header tank



**FMHTGTI**  
Nissan GTi-R alloy header tank



**FMHT064T**  
Subaru Impreza MY 93 alloy header tank

**FMHTR56**  
BMW Mini R56 Models (2007 on) alloy header tank



**FMHT058**  
Renault 5 GT Turbo Phase 2 alloy header tank



**FMHT054**  
Ford Escort RS Turbo Series 1 alloy header tank





## TUNING ACCESSORIES

PART NUMBER DESCRIPTION

FMBV050 Under Bonnet Bleed Valve (Lockable)

FMICB051 In-Car Boost Adjuster

FMICFK052 In-Car Boost Fitting Kit

FMUN05 Unos Boost Controller

FMTPO52A 'T' Piece 60mm Diameter

FMTPO52B 'T' Piece 50mm Diameter

FMTPO52C 'T' Piece 40mm Diameter

FMTPO52D 'T' Piece 68mm Diameter

FMTB052K10 10mm Blanking Plug

FMTB052K20 20mm Blanking Plug

FMTB052K25 25mm Blanking Plug

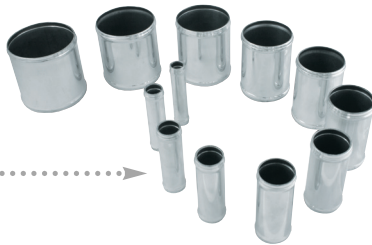
FMTB052K28 28mm Blanking Plug

FMTB052K34 34mm Blanking Plug

FMAJ13-102 Alloy Joiners

### FMAJ13-102

Alloy Joiners available in a range of sizes from 13 to 102mm diameter



### FMTB052K

Alloy blanking plugs in a range to suit hoses with an internal diameter of 10, 20, 25, 28 and 34mm with grooved circumferences to ensure excellent retention within the hose.



### FMTPO52

Available to suit hose diameters of 40, 50, 60 and 68mm these are ideal for installing dump valves / BOV's.

## IN-CAR BOOST VALVES, BLEED VALVES AND BOOST CONTROLLERS

Our in-car boost and under bonnet bleed valves allow the fine tuning of boost pressure on turbo engine vehicles. Both are installed by connecting into the existing turbo compressor housing to turbo actuator connection hose.



### FMBV050

Underbonnet bleed valve (lockable)



### FMICB051

In-car boost adjuster



### FMUN05

The Forge UNOS boost controller is CNC machined to aircraft specifications and incorporates a ratchet type top adjuster that will allow for the positive and precise adjustment that your driving style demands. The controller can be dash or engine bay mounted to suit your preference.

# SILICONE HOSES

## AUDI SILICONE HOSES

PART NUMBER	DESCRIPTION
FMKT008	TT/S3 210/225hp - 2 Piece Upper Intercooler Hose Kit
FMKT007	TT/S3 210/225hp - 3 Piece Lower Intercooler Hose Kit
FM225IND	TT/S3 210/225hp - Induction Hose
FMKT005	A3/TT 180 - 5 Piece Turbo Hose Kit
FMKC005	VAG 1.8T - 7 Piece Coolant Hose kit
FM180IND	A3/TT 180 - Induction Hose
FMA4B5IND	A4 1.8T B5 - Induction Hose AEB/ATW/AWM/AVJ
FMA4B6IND	A4 1.8T B6 - Induction Hose
FMKC010	A3/TT FSiT 2.0 - 8 Piece Coolant Hose Kit
FMKT010	A3/TT FSiT 2.0 - 3 Piece Turbo Hose Kit

## BMW SILICONE HOSES

PART NUMBER	DESCRIPTION
FMKCM3	E46 M3 - Coolant Hoses

## FORD SILICONE HOSES

PART NUMBER	DESCRIPTION
FMKC002	2005 on Ford Mustang GT - 4 Piece Radiator Hose Kit

## MITSUBISHI SILICONE HOSES

PART NUMBER	DESCRIPTION
FMKCCZT	Colt CZT - Coolant Hoses (3)
FMTCCZTA	Colt CZT - Turbo Hoses (3)
FMTCCZTB	Colt CZT - Turbo Hoses (2)
FMINDCZT	Colt CZT - Induction Hose
FMKC003	Lancer Evo 8/9 - Upper and Lower Radiator Hoses
FMKT003	Lancer Evo 8 - Intercooler Hoses

## NISSAN SILICONE HOSES

PART NUMBER	DESCRIPTION
FMKC004	Silvia RPS13/S14 SR20DETT 2.0 Liter Turbo Upper and Lower Radiator Hoses

## PORSCHE SILICONE HOSES

PART NUMBER	DESCRIPTION
FMKA996	911 Carrera 996 (98-02)
FMKT996	997 Turbo - Turbo Hoses (5)

## RENAULT SILICONE HOSES

PART NUMBER	DESCRIPTION
FMINDMEG	Megane 225 - Induction Hose

## SEAT SILICONE HOSES

PART NUMBER	DESCRIPTION
FMKT005	Leon 1.8T 180 hp - 5 Piece Intercooler Hose Kit
FMKC005	Leon 1.8T - 7 Piece Coolant Hose Kit
FMKT006	Leon 1.8T 150 hp - 5 Piece Intercooler Hose Kit
FM180IND	Leon Induction Hose (see fitment guide)
FMGOLFIND	Leon Induction Hose (see fitment guide)
FMKT008	Leon Cupra R 210/225hp - 2 Piece Turbo Hose Kit
FMKT007	Leon Cupra R 210/225hp - 2 Piece Lower Int. Hose Kit
FM225IND	Leon Cupra R 210/225hp - Up-rated Intake Hose
FMIBIND	Ibiza Mk3 1.8T AQX / AYP - Up-rated Intake Hose
FMINDIBFR4	Ibiza Mk4 - Updated Intake Hose

## SKODA SILICONE HOSES

PART NUMBER	DESCRIPTION
FMKT006	Octavia 1.8T 150/180 hp - 5 Piece Int. Hose Kit
FM180IND	Octavia 1.8T - Induction Hose

## SMART SILICONE HOSES

PART NUMBER	DESCRIPTION
FMSMTIND	For Four and Roadster - Induction Hose
FMKTSC	Smart Car - Turbo Hoses (2)

## SUBARU SILICONE HOSES

PART NUMBER	DESCRIPTION
FMKT001	Impreza WRX '02 on - 3 Piece Intercooler Hose Kit
FMKC001	Impreza WRX/STi '02 on - 2 Piece Coolant Hose Kit
FMKCE001	Impreza WRX/STi '02 on - 9 Piece Anc. Coolant Hoses
FMKCSUBGR	Impreza STi GR '08 - Coolant Hose Kit

## VOLKSWAGEN SILICONE HOSES

PART NUMBER	DESCRIPTION
FMKT005	Golf MK4 1.8T 180 hp - 5 Piece Intercooler Hose Kit
FMKC005	VAG 1.8T - 7 Piece Coolant Hose kit
FMKT006	Golf MK4 1.8T 150 hp - 5 Piece Intercooler Hose Kit
FM180IND	Golf MK4 - Induction Hose (see fitment guide)
FMGOLFIND	Golf MK4 - Induction Hose (see fitment guide)
FMKT010	VAG 2.0 FSiT - 3 Piece Turbo Hose Kit
FMKC010	Golf MK5 FSiT 2.0 - 8 Piece Coolant Hose Kit
FMA4B5IND	Passat 1.8T B5 AEB/ATW/AWM/AVJ - Induction Hose
FMA4B6IND	Passat 1.8T B5.5 - Induction Hose
FMINDP05	Polo Mk5 N2 GTi - Induction Hose
FMPOLOTB	Polo Throttle Body Hose
FMKCSCI	Scirocco - Coolant Hoses
FMTHSCID	Scirocco - Top Coolant Hose for DSG Gearboxes
FMTHSCIM	Scirocco - Top Coolant Hose for Manual Gearboxes
FMCCSCI	Scirocco - Carbon Canister Hose



### FMKT001

3 piece turbo hose kit for Subaru Impreza

# SILICONE HOSES

Each Silicone hose has been designed to provide minimal resistance to the flow of air into the turbocharger. Air entering the compressor section of a turbocharger will be traveling close to Mach 1, consequently any restrictions or convoluted sections in the induction path greatly reduce the efficiency with which the turbo can deliver air to the engine.

The hoses are constructed from a multi-layer silicone and fabric composite with a helically wound spring steel cage embedded between the ply for super resistance to vacuum assisted collapse. A common occurrence on chipped or large turbo engines.

## INDUCTION HOSE FITMENT GUIDE

### PART NUMBER ENGINE CODE

FMGOLFIND	AWU / AWP / APP / AUM / AWW AWD / AUQ / ARX / ARY
FM180IND	AVC / APH / AJQ / AGU / ATC
FM225IND	AMK / BAM / APX / AUL
FMIBIND	AQX / AYP
FMA4B5IND	AEB / ATW / AWM / AVJ
FMA4B6IND	BFB / BEX
FMIBIND	AQX / AYP

Our range of Silicone hose kits is constantly developing. Please call with your requirements.



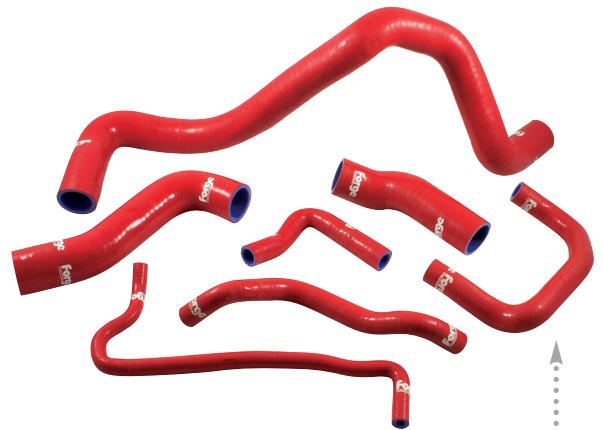
FM225IND  
Audi TT 225



FMGOLFIND  
VAG 1.8T  
intake hose



FMKT010  
VAG 2.0 FSIT 3 Piece  
turbo hose kit



FMKC005  
Golf MK5 FSIT  
8 Piece Coolant  
Hose Kit



FMA4B5IND  
Passat 1.8T B5  
induction hose



We are stockists for the entire range of siliconhoses.com products – please see their separate information sheet or contact us with your requirements

# INDUCTION KITS

SILICONE INDUCTION KITS	
PART NUMBER	DESCRIPTION
FMIND01	VAG 1.8T KONA High Velocity Induction Kit
FMIND02	VAG 2.0 FSiT Cold Air Induction Kit
FMIND03	VAG 2.0 FSiT Carbon Induction Kit
FMIND010	VW Golf 1.4TSi Induction Kit
FMINDSCI	VW Scirocco 2.0 FSiT Induction Kit
FMIND05	BMW Mini Cooper S (R56) Carbon Induction Kit
FMINDGTIR	Nissan GTi-R Induction Kit
FMINDGTS	Nissan Skyline GT-S Induciton Kit
FMINDGTR	Nissan Skyline GT-R Twin Induction Kit
FMINDGR	Subaru 2008 Impreza Sti GR Induction Kit



# CHASSIS/CARBON FIBRE

CHASSIS PART NUMBER	DESCRIPTION
FMMINSBF	BMW Mini R50 Front Strut Brace (Cooper S)
FMSBR56D	BMW Mini R56 Front Strut Brace (Cooper Diesel)
FMSBR56CS	BMW Mini R56 Front Strut Brace (Cooper S)
FMC0SSB	Ford Cosworth Alloy Strut Brace
FMSBEV07	Mitsubishi Evo 7 Alloy Front Strut Brace
FMSBEV08	Mitsubishi Evo 8 Alloy Front Strut Brace
FMSBREVO	Mitsubishi Evo 6 Alloy Rear Strut Brace
FMSBREVO7	Mitsubishi Evo 7/8 Alloy Rear Strut Brace
FMSBIBI	Seat Ibiza Diesel Mk4 Alloy Strut Brace
FMIB4RSB	Seat Ibiza Mk4 Rear Alloy Strut Brace
FMIB4RSB	Skoda Fabia Rear Alloy Strut Brace
FMCFSB01	Subaru Impreza Post MY 01 Carbon Strut Brace
FMSBGR	Subaru 2008 Impreza Sti GR Front Strut Brace
FMCFSMK4	VW Golf Mk4 Carbon Strut Brace
FMAUTB2	Audi TT Adjustable Tie Bars (Rear Control Arms)

CARBON PART NUMBER	DESCRIPTION
FMMINIT	BMW Mini R50/R53 Cooper S Bonnet Scoop
FMCF02	VW Golf 1.8T Engine Cover
FMCF03	VAG 1.8T 210/225bhp Engine Cover
FMUNCTCF	Alloy and Carbon Fibre Universal Catch Tank

**FMCF02**  
VW Golf 1.8T engine cover



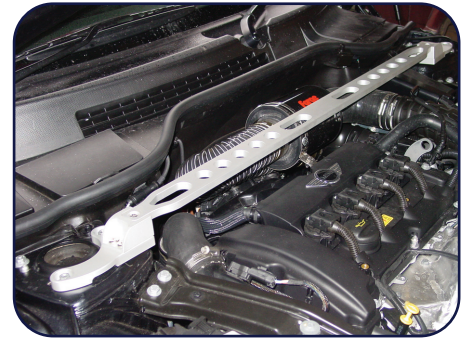
**FMMINIT**  
Mini Cooper 'S' bonnet scoop



**FMCFSMK4**  
VW Golf Mk4 carbon strut brace



**FMSBR56CS**  
BMW Mini R56 Front Strut Brace (Cooper S)



## FMAUTB2

Allowing the adjustment of the suspension geometry these tie bars are essential when the vehicle has been lowered. Incorporating polyurethane bushes this replacement will not only help you to improve your suspension characteristics but also through increasing tyre contact area, improve tyre wear abnormalities.

**FMSBR56D**  
BMW Mini R56 Cooper Diesel alloy strut brace



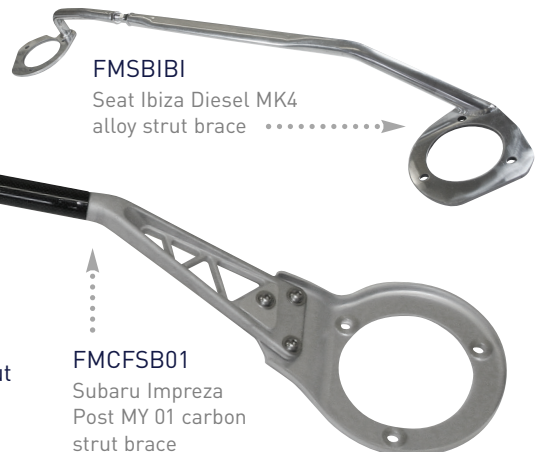
**FMSBIBI**  
Seat Ibiza Diesel MK4 alloy strut brace



## CARBON FIBRE AND ALLOY STRUT BRACE

Ensure that when you are driving hard, your vehicle's handling will not deteriorate because the strut towers are moving. Use a good quality strut brace constructed from carbon fibre and alloy, which is high on strength and low on weight and creates a great looking functional upgrade.

**FMCFSB01**  
Subaru Impreza Post MY 01 carbon strut brace



Your local authorised Forge Motorsport distributor is:

Forge Motorsport  
Unit 1, Ashville Trading Estate,  
Bristol Road, Gloucester GL2 5EU UK

Tel. +44 (0) 1452 380999  
Fax. +44 (0) 1452 386333

[info@forgemotorsport.co.uk](mailto:info@forgemotorsport.co.uk)  
[www.forgemotorsport.co.uk](http://www.forgemotorsport.co.uk)

Forge Motorsport Inc.  
6536 Pinecastle Blvd, Suite 'C'  
Orlando, FL 32809 USA

Tel. (001) 407 447 5363  
Fax. (001) 407 447 5361

[sales@forgemotorsport.com](mailto:sales@forgemotorsport.com)  
[www.forgemotorsport.com](http://www.forgemotorsport.com)